



# Bright and beautiful

Medics Super Speciality Hospital has been built to blend with the surroundings as well as reflect international best practices

BY TEAM HR

The 320-bed Medics Super Speciality Hospital in Lucknow has been conceptualised by founder chairman and cardiologist, Dr Sushil Gattani, with a vision to promote high-end tertiary care to masses. The brief given to RSMS Architects for the project was to plan and design a state-of-the-art hospital which would create a paradigm shift in private healthcare in India's most populous state.

The site for the hospital lay at a vital point in the city, nestled between two arterial roads, one of them the iconic and picturesque Lucknow Ring Road. The site

was also in the vicinity of several green areas including the Baudh Vihar Shanti Upawan and the expansive Kanshi Ram Memorial Park. Says Dr Mayank Soman, CEO, Medics Hospital, "The owners wanted to design a building that would respond to the surroundings and, at the same time, correspond to international best practices in the field of healthcare design."

One of the major challenges in building the hospital was the presence of sandy type of soil on the site. In order to build the three basements required for the building, the sandy soil had to be retained using a

1. The hospital was built over a period of two years.

concrete piling system. The piling was done along the perimeter of the site up to a depth of 20 meters after which excavation was conducted for three basements.

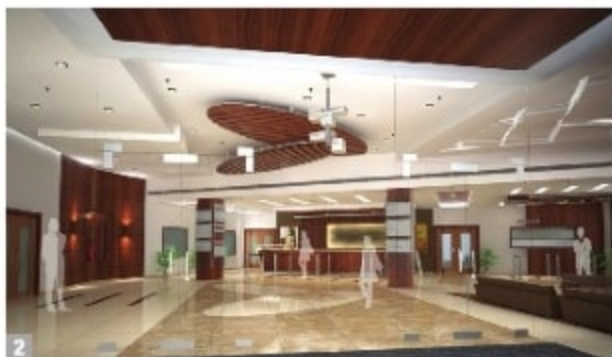
#### Dazzling design

**Lobby:** The entrance to the building has been created in the form of a glass box, accentuated by dark wood which welcomes the visitor with its transparency into a grand entrance lobby. Says Ar Manu Malhotra, founder and partner, RSMS Architects, "The interiors of the lobby, which are also partly visible from the outside, are done in rich tones and textures. The lobby itself is designed as a tableau of juxtaposed shapes, colours and textures. The playful ceiling aides in way finding and visual segregation of spaces. The information desk occupies the prime position acting as the nodal point of the lobby." The ambience is further enhanced by providing lounge type seating in the main lobby with handpicked pieces accentuating the feature wall.

**OPD waiting area:** The OPD of the hospital follows a visitor flow that follows a hierarchy of spaces, starting with the central out-patient department lobby to the consultant room. The central waiting area of the OPD is kept clutter free. The out-patient department is designed as a series of speciality pods, each with its own sub-waiting. "These waiting areas are dealt with sensitivity to their nature. The mother and child department is coloured in vibrant and playful colours with artwork matching the playful mood," says Malhotra.

The cardiac and orthopaedic pods have niches for parking of wheelchairs and stretchers. The oncology department contains a treatment planning room which is essential to the department. The mother & child OPD has been designed in a cheerful and vibrant ambience. Also, the provision of play area for toddlers makes it enlivening.

**Diagnostic wing:** The main diagnostics department is situated on the ground floor at a vantage location in proximity to the emer-



gency department and with well-routed connections to the patient lift core connecting to the In-patient department and the visitor lift core connecting to the OPD.

**Consultation room:** The design of the consultation rooms is aimed to maintain patient privacy and the sanctity of the patient-doctor relationship. "The layout of the consultant rooms is simple and care has been taken to provide enough space for the movement of stretchers and wheelchairs," says Dr Somani.

The examination area of each room is designed to provide maximum privacy during physical examinations. The finish of the consultant rooms is utilitarian with a dash of colour added to the walls which complements the wooden textures of the furniture and makes the room lively.

**2.** The lobby is designed as a tableau of juxtaposed shapes, colours and textures.

**3.** The design of the consultation rooms is aimed to maintain patient privacy and the sanctity of the patient-doctor relationship.



4

### AT A GLANCE

**Name of the project:** Medics International Hospital

**Cost of the project:** Rs 90 crore

**Duration of the project:** 24 months

**Date of commissioning of the project:** March 2017

**In built area:** 3,50,000 square feet

**Land area:** 6972 square metre

**False Ceiling/roofing:** From Saint Gobain

**Drywalls:** From Sant Gobain

**Painting:** From Acro Paints

**Architect:** Manu Malhotra, RSMS Architects

**Interior designer:** Manu Malhotra, RSMS Architects



Dr Mayank Somani,  
CEO, Medics  
Hospital



Ar Manu Malhotra,  
founder and partner,  
RSMS Architects

4. The ambience of the in-patient rooms are designed to give a light and airy ambience.

### Rooms with a view

The hospital provides for five different kinds of rooms: the VIP suites, deluxe single occupancy rooms, single occupancy rooms, double occupancy rooms and general wards. "The ambience of the in-patient rooms are designed to give a light and airy ambience with large, deep set windows which let in copious amounts of diffused light," says Dr Somani.

Colours are used as highlights on the walls,

their themes dictated by the general use of the rooms. For instance, patient rooms in the maternity section of the hospital are coloured in rich mauve and pink, whereas patient rooms in the general section are highlighted with walls of a vibrant green. This colour palette is also in harmony with the wooden tones that are used for the furniture and the panelling.

### OTs with daylight

The surgical suite at Medics consists of eight OTs, there are two transplant OTs and two general OTs with one OT each dedicated to neurology, orthopaedics, CTVs and urology-gastroenterology. The surgical suite is also in close proximity to two cath labs. The OTs are designed as modular OT with HPL paneling. All OTs are provided with day lighting through windows. The ones on the inside with no daylight are provided with graphical wall panels to enliven the otherwise dull ambience of a typical OT. Dedicated AHUs with HEPA filters serve each OT. These AHUs are placed on the floor immediately above the surgical suite.

The surgical corridor is accessed by doctors and staff through a two corridor system. The OTs are designed to be visually appealing with serene artwork integrated into the panel walls. This offers visual relief to doctors and staff working for long hours on a single surgical procedure.

### Cosy cafeterias

The cafeterias are located on ground floor and basement where major percentage of the public movement happen. The design of a café is made interesting by manipulating the ceiling planes, wall boundaries, and seating heights creating zones in these spaces for serving, dining, lounging, and personal space.

Staff dining areas are designed ensuring that the space achieves optimal flow and space efficiencies, both in the serving/dining zones and back-of-house areas. These spaces are equipped with movable furniture and modular systems that can be transformed

for different functions during work hours and afterwards.

#### Getting floored

The flooring at Medics follows both function and utility while creating an interesting visual pattern. The entrance lobby and the visitor areas on each floor of the hospital are done in rich, polished marble. The flooring pattern in the lobby is designed to provide clear pathways in an easily comprehensible manner. "Using a simple three colour palette consisting of three classic shades of Italian marble, this design also compliments the ceiling design of the entrance lobby which is an interesting play of juxtaposed shapes and textures," says Malhotra.

Emergency, diagnostic areas and labs needed a finish that was both sturdy and easily cleanable, and the obvious choice was vinyl. The same was used for the critical patient areas and OT complex. For all other areas, tiles are being used for their abrasion resistance to pedestrian, equipments, beds and trolley movements.

#### Lush green landscape

Terraces with trellises lining the edge cover the entrance and the podium and balconies line the narrow end of the 'bed tower'. These terraces and balconies are not just green spaces, they also serve as spillover to waiting and visitor areas at some places and housing for mechanical areas at other places. The terrace of the podium has been designed as a beautifully landscaped terrace garden which is accessed from the IPDs offering patients a chance to move into the fresh air, while maintaining privacy. Two internal courtyards have been designed as an extension to the healing space of the terrace garden.

#### Colours match functionality

In the design of Medics Hospital, artwork, wall finishes and fenestration combine to create a beautiful and harmonious aesthetic language in the hospital interiors. "The glazing on the external face has been thought-



fully designed with double glazed units used on the southern face and single glazed units used on the other faces. The glazing has been carefully chosen for its high reflective index," says Malhotra. The fenestration is shaded by various devices such as deep set windows and pergolas. This allows for large openings which flood the interior with diffused daylight with minimum heat gain.

Sunlight combines with colour in the hospital interior to create a vibrant atmosphere. On a background of pristine white, highlight walls create large swathes of colour which serve to enliven the atmosphere. "The colour themes match the functionality of the area. Thus the IPDs are done in soft and subtle earth hues of brown, ochre and olive, the ODs in a bright and vibrant orange, the mother and child facility in shades of mauve and pink, whereas the sterile areas such as ICUs and the surgical suite are coloured in sterile blue hues," says Malhotra.

Glazing on the interior doors and windows connect areas visually, while the colour themes seen in some places through full length glazing and in some places through thoughtfully placed strips of glass help in connecting the functionality of the spaces. ■

5. The cafeterias are located on ground floor and basement, where major percentage of the public movement happens.